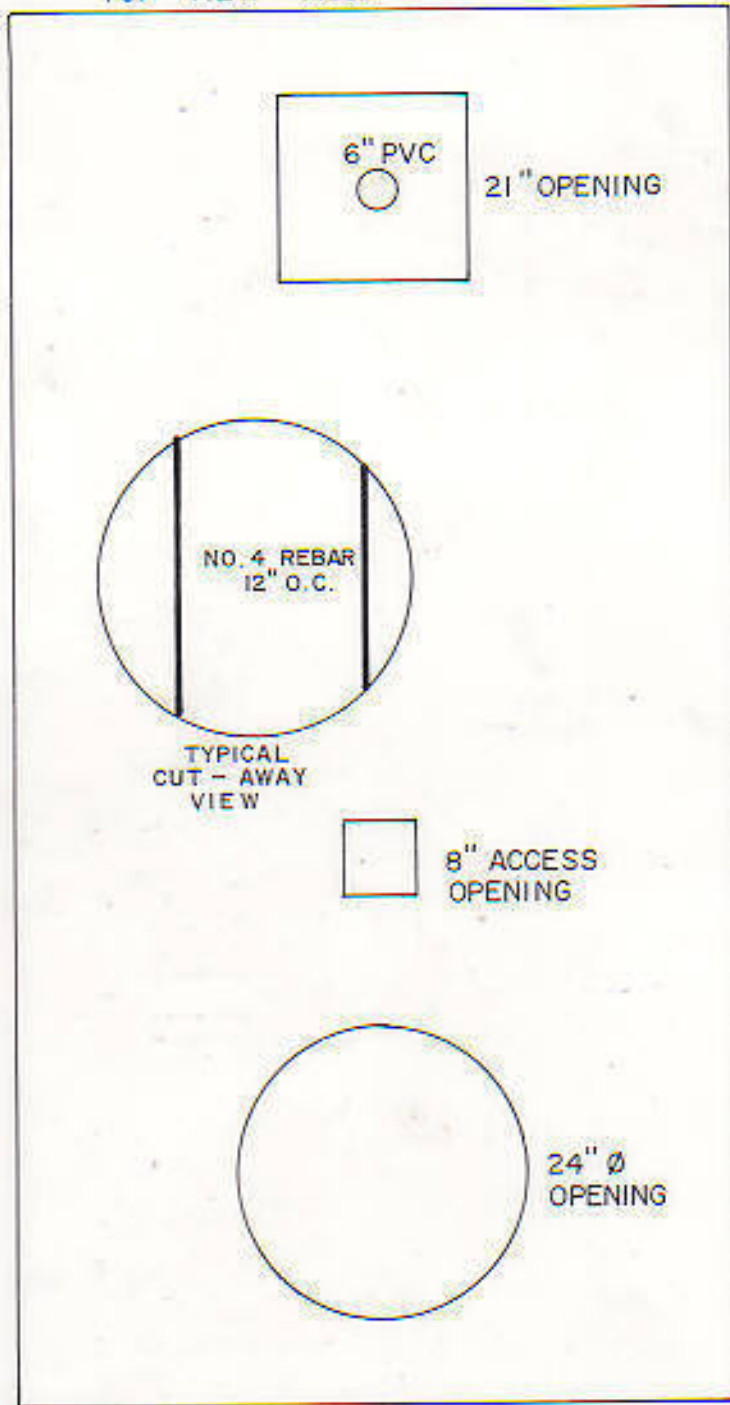


PUMP STATION TOP

TOP VIEW N.T.S.



CONCRETE - 4000 P.S.I.
REINFORCEMENT - NO. 4 REBAR 12" O.C.
LENGTH TO WIDTH RATIO - 2 TO 1
LOAD DESIGN - 150 LBS. PER SQUARE FT.
WEIGHT - 4000 LBS.
LIFTING HOOKS SUPPLIED

118"

END VIEW N.T.S.



Concrete Designs, Inc.

LITTLE RIVER 843-399-1515 , SURFSIDE 843-650-0099